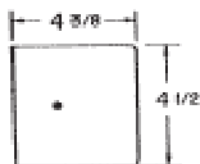
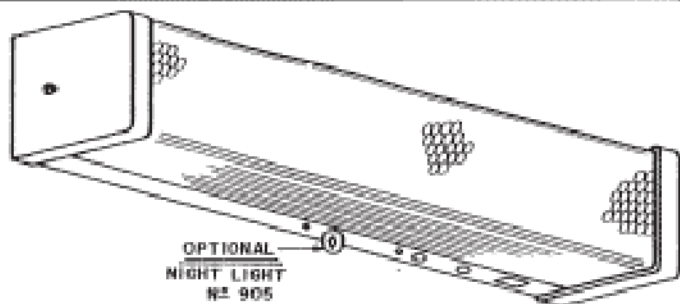
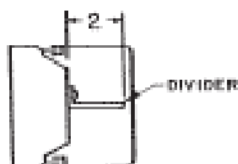


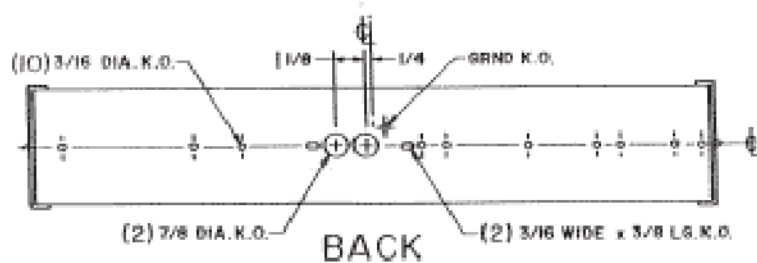
SERIES 213



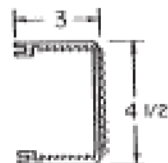
END



DIVIDER
(OPTIONAL)



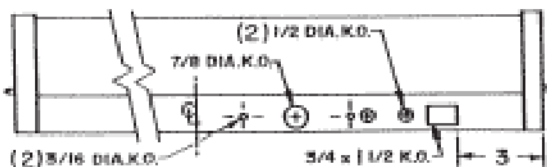
BACK



DIFFUSER

All U.L. listed. All wired for 120v.
Please advise if 277v. required.
Available with switches, outlets
and projector assemblies.
Other lamp combinations possible.
Lamps available. Dimensions
subject to change, please consult
factory for verification.

SIZE	LENGTH
4W	6 7/16"
6W	9 1/4"
8W	12 1/4"
14W	15 1/4"
15W	18 1/4"
20W	24 1/4"
30W	36 1/4"
40W	48 1/4"



SIDE